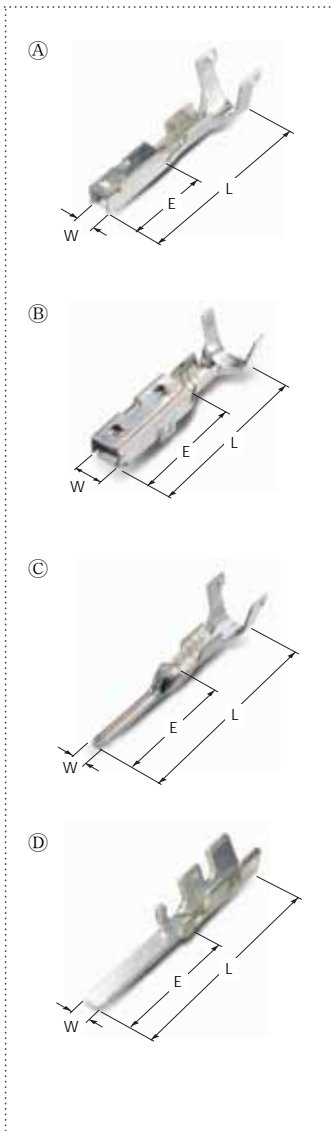


SSD & 0509WP CONNECTOR

TERMINAL



Part No.	Wire Range		Tab Thick.	Material		Dimension(mm)			Type
	AWG	mm ²		Thick.	Finish	L	E	W	
ST731103-3	24	CHFUS(AVSS) 0.22	0.64	0.2	Copper Alloy Pre-Tin	14.9	6.2	1.8	(A)
ST730622-3	18	CAVS 0.3-0.5 CAVS 0.85	0.64	0.2	Copper Alloy Pre-Tin	14.9	6.2	1.8	(A)
ST730689-3	22-20	AVSS 0.3-0.5	0.64	0.25	Copper Alloy Pre-Tin	16.9	9.0	2.9	(B)
ST730732-3	18-16	AVSS(CAVS) 0.85-1.25	0.64	0.25	Copper Alloy Pre-Tin	16.9	9.0	2.9	(B)
ST730733-3	14	AVSS 2.0	0.64	0.25	Copper Alloy Pre-Tin	16.9	9.0	2.9	(B)
ST740709-3	22-18	AVSS(CAVS) 0.3-0.85	0.64	0.25	Copper Alloy Pre-Tin	19.7	10.4	1.2	(C)
ST740630-3	18-16	AVSS(CAVS) 0.85-1.25	0.6	0.6	Brass Pre-Tin	26.3	14.8	2.25	(D)

WIRE SEAL

Part No.	Wire Range mm ²	Material	Color	Dimension(mm)		Type
				L	E	
MG 680713	CAVS 0.3-0.5	Silicone	Red	7.8	6.0	(E)
MG 680714	AVSS 0.3-0.5 CAVS 0.85	Silicone	Green	7.8	6.0	(E)
MG 684320	CHFUS 0.22	Silicone	Blue	7.8	6.0	(E)
MG 680715	Dummy Seal	Silicone	Black	8.2	6.2	(F)



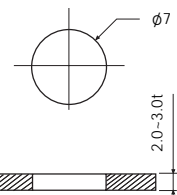
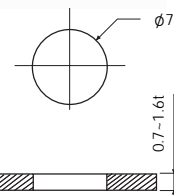
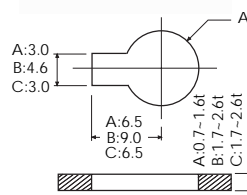
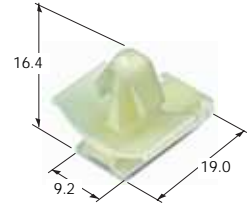
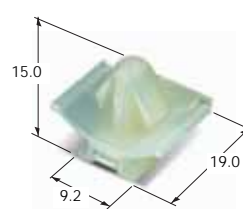
⇒ Suitable Terminal (B) : SWP Wire Seal (109 Page)

CLIP

MG 630418 (7 φ-A)
MG 630559 (9 φ-B)
MG 631467 (7 φ-C)

MG 630922

MG 633061



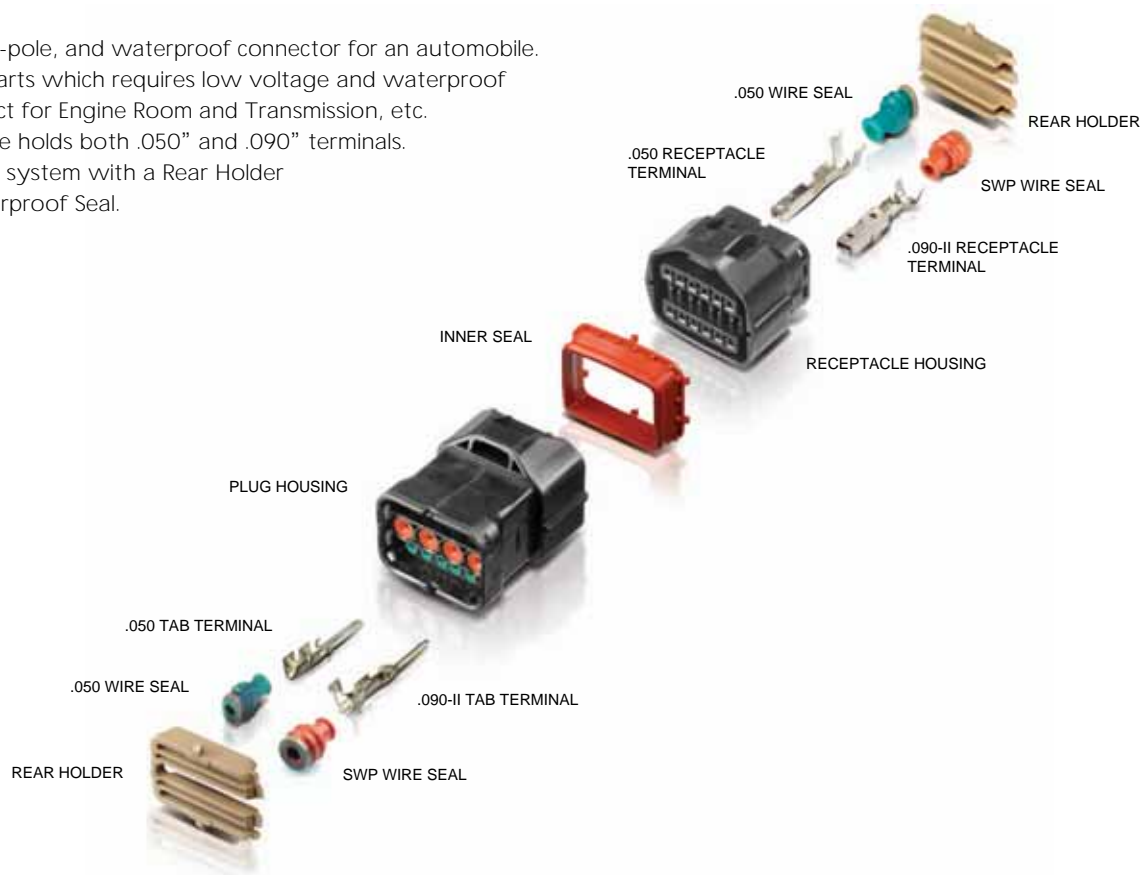
Bracket Hole Size

Bracket Hole Size

Bracket Hole Size

SSD & 0509WP CONNECTOR

- ▶ Small size, multi-pole, and waterproof connector for an automobile.
- ▶ Designed for parts which requires low voltage and waterproof function : Perfect for Engine Room and Transmission, etc.
- ▶ Hybrid structure holds both .050" and .090" terminals.
- ▶ Double Locking system with a Rear Holder
- ▶ Individual waterproof Seal.


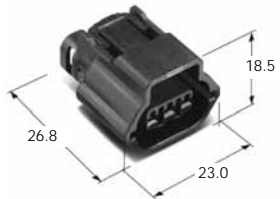
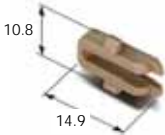
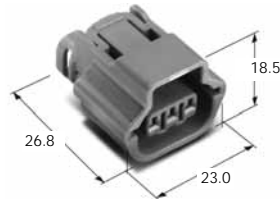


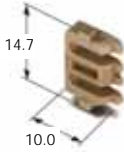
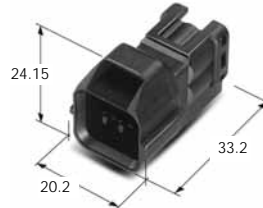
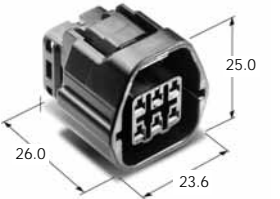




HOUSING

Poles	Plug housing for male terminal	Receptacle housing for female terminal	Rear holder
1	<p>MG 610701-5</p>	<p>MG 640703-5</p>	<p>MG 630704-7</p>
2	<p>MG 610705-5</p>	<p>MG 640707-5 MG 642562-5(ATM)</p>	<p>MG 630708-7</p>
3	<p>MG 611611-5</p>	<p>MG 641234-5</p>	<p>MG 631233-7</p>

SSD & 0509WP CONNECTOR

HOUSING

Poles	Plug housing for male terminal	Receptacle housing for female terminal	Rear holder
3		MG 641295-4 	MG 631233-7
		MG 643744(A) 	
		MG 643746(B) 	
4	MG 611236-5 	MG 641238-5 	MG 631237-7 
6	MG 611624-5 	MG 641627-5 	MG 631626-7 
10		MG 643793-5  (050 WP 6P+090 WP 4P)	

SSD & 0509WP CONNECTOR

HOUSING

Poles	Plug housing for male terminal	Receptacle housing for female terminal	Rear holder
10	MG 611284-40(5) MG 611374-41(4) MG 612716-40(5)(ATM) (HPA) MG 612717-5(4)(ATM)  MG 631286-7 	MG 641288-4(B)  MG 641299-5(A)  (050 WP 6P+090 WP 4P)	MG 631289-7 
	MG 610709-5 	MG 640711-5(R/H;MG 630712-7) 	MG 630712-7 
12	MG 612626-41(HPA) 	(050 WP 8P+090 WP 4P) MG 643739(R/H;MG 630712-7) 	MG 632627-7 
	MG 613740 	(050 WP 8P+090 WP 4P) MG 641767-5 	MG 631766-7 
16	MG 611764-5 	(050 WP 12P+090 WP 4P)	